

PORTABLE DAVIT CRANE

ENSIGN[®] 500 SERIES



LiftingPlus
Hijsen met visie

Samen voor kwaliteit!



van den Berg Bros
Takeltechniek

ENSIGN® 5PA5

PORTABLE DAVIT CRANE

PORTABLE LIFTING POWER for Tall Obstacles

The 5PA5 Ensign 500 portable davit crane (up to 500 pounds) is designed to lift and smoothly rotate taller loads, 360 degrees, with minimal boom adjustment. A longer mast and boom provide the extra hook height (up to 101 inches with pedestal base) required to clear safety gates, rails, and other obstacles. An ergonomic design, winch options, quick-disconnect feature, and boom adjustment knob make it extremely user-friendly. Add an optional rotation lock to further enhance unloading. Easy disassembly and reassembly with quick-release hardware and pins maximize portability for storage or use with other bases. Ideal for water/wastewater applications.

Enhanced Portability

- Disassembles and reassembles easily, using quick-release hardware and pins for quick transport to storage or bases at other work sites—no tools required
- Move your crane to another location while keeping the wire rope attached to the load using the quick-disconnect feature. Insert the swaged-ball end of the wire rope into the keyhole slot on the tab of the pedestal base or into an optional wire rope keeper or cable spool

Durable Construction & Finish

- Heavy-duty, welded structural steel pipe and tubing limit deflection and meet/exceed ASTM standards
- Corrosion-resistant, powder-coated frame, mast cap, and stainless-steel fasteners resist the elements for long service life
- Galvanized, epoxy, and 304 or 316 stainless-steel finishes are available for corrosive environments

Product Shown:
5PA5-M1

360° Rotation & Flexible Operation

- Nylatron® bushing at base enhances smooth, 360-degree rotation under load for precise load placement. Optional rotation lock facilitates unloading ease
- Rotation handle design does not interfere with boom angle adjustment for easier operation
- Adjustable boom angles and four sheave assembly positions along boom are easily changed (without tools) to accommodate a variety of applications. Boom adjustment knob allows for easy, one-hand adjustment when not under load
- Choose from manual, drill-drive, or powered winch (electric, pneumatic, or hydraulic motors) operation to accommodate a variety of speed and power requirements. DC motors and various voltage AC motors available



STANDARD CONFIGURATIONS

IMPERIAL/METRIC

Series	Description	Up To Capacity
5PA5-M1	Powder-coat crane with M4022PB-K spur gear hand winch	500 lbs / 226 kg
5PA5G-M1	Galvanized crane with M4022PB-K spur gear hand winch	500 lbs / 226 kg
5PA5-M2	Powder-coat crane with 4WM2V-K worm gear hand winch	500 lbs / 226 kg
5PA5G-M2	Galvanized crane with 4WM2V-K worm gear hand winch	500 lbs / 226 kg
5PA5S-M3	Stainless-steel crane with M4042PBSS-K spur gear hand winch	500 lbs / 226 kg
5PA5-E2	Powder-coat crane 4WP2V-K electric winch	500 lbs / 226 kg
5PA5X-E2X	Epoxy-gray crane with epoxy-gray 4WP2VEGRA-K electric winch	500 lbs / 226 kg

Flexible Configurations

- A variety of base mounting options, including pedestal, flush, and wall-mount, help meet numerous lifting needs
- A quick-mount winch bracket is standard (no tools required) and accommodates several Thern winches. Fits any three convenient/ergonomic positions on the mast via quick-connect pins



NOTICE: These products are not for lifting people or things over people.

Refer to technical pages for detailed performance information.

TECHNICAL DRAWINGS & SPECIFICATIONS

ENSIGN® 500 PORTABLE DAVIT CRANE

CONFIGURATIONS

Model	Description	Approx. Ship Wt.	
		(lb)	(kg)
Popular Configurations			
5PA5-M1	up to 500 lb capacity with M4022PB-K spur gear hand winch—powder-coat crane	82	37
5PA5G-M1	up to 500 lb capacity with M4022PB-K spur gear hand winch—galvanized crane	82	37
5PA5-M2	up to 500 lb capacity with 4WM2V-K worm gear hand winch—powder-coat crane	107	49
5PA5G-M2	up to 500 lb capacity with 4WM2V-K worm gear hand winch—galvanized crane	107	49
5PA5S-M3	up to 500 lb capacity with M4042PBSS-K spur gear hand winch—stainless-steel crane	89	40
5PA5-E2	up to 500 lb capacity with 4WP2V-K electric winch—powder-coat crane	150	68
Crane Only			
5PA5	up to 500 lb capacity—base model—powder-coat finish	65	29
5PA5G	up to 500 lb capacity—base model—galvanized finish	65	29
5PA5S	up to 500 lb capacity—base model—304 stainless-steel finish	65	29
5PA5S316	up to 500 lb capacity—base model—316 stainless-steel finish	65	29
5PA5X	up to 500 lb capacity—base model—epoxy-gray finish	65	29
Winch Only			
M1	M4022PB-K—spur gear hand winch only—zinc plated	17	8
M2	4WM2V-K—worm gear hand winch only—powder coat	42	19
M2X	4WM2VEGRA-K—worm gear hand winch only—epoxy gray	42	19
M3	M4042PBSS-K—spur gear hand winch only—stainless steel	24	11
E2	4WP2V-K electric winch—115/1/60 VAC with 6 ft pendant control—enamel	85	39
E2X	4WP2VEGRA-K electric winch—115/1/60 VAC with 6 ft pendant control—epoxy gray	85	39
E4	4777-K electric winch—115/1/60 VAC with 6 ft pendant control—enamel	110	50
E4X	4777EGRA-K electric winch—115/1/60 VAC with 6 ft pendant control—epoxy gray	110	50
E4DC	4777DC-K electric winch—12 volt DC with 10 ft pendant control—enamel	105	48
E4DCX	4777DCEGRA-K electric winch—12 volt DC with 10 ft pendant control—epoxy gray	105	48

Independent Bases—sold separately

Pedestal, socket (flush-mount), or wall-mount style.

IMPORTANT: Base installation is the purchaser's responsibility. Thern recommends consulting a civil engineer or other qualified professional. Contact Thern for installation guidelines.

Finishes	MODELS		
	Pedestal	Flush	Wall
Powder Coat Paint	5BP5	5BF5	5BW5
Galvanized	5BP5G	5BF5G	5BW5G
304 Stainless Steel	5BP5S	5BF5S	5BW5S
316 Stainless Steel	5BP5S316	5BF5S316	5BW5S316
Epoxy Paint	5BP5X	5BF5X	5BW5X
Approximate Ship Weight	21 lbs (9.5 kg)	21 lbs (9.5 kg)	23 lbs (10.4 kg)



Wire Rope Assemblies—sold separately

Galvanized or stainless steel wire rope assemblies with swaged-ball fitting to work with the quick-disconnect anchor on the winch. See wire rope page for stainless steel and additional wire rope options. 1/8" wire rope is available with reduced load capacity. Please contact factory.

Wire Rope Length		Galvanized Aircraft Cable		304 Stainless Steel Wire Rope	
		3/16" Dia. (4.8 mm)	1/4" Dia. (6.4 mm)	3/16" Dia. (4.8 mm)	1/4" Dia. (6.4 mm)
(ft)	(m)	Model No.	Model No.	Model No.	Model No.
20	6.0	WA19-20NS	WA25-20NS	WS19-20NS	WS25-20NS
28	8.5	WA19-28NS	WA25-28NS	WS19-28NS	WS25-28NS
36	10.9	WA19-36NS	WA25-36NS	WS19-36NS	WS25-36NS
45	13.7	WA19-45NS	WA25-45NS	WS19-45NS	WS25-45NS
60	18.2	WA19-60NS	—	WS19-60NS	—
75	22.8	WA19-75NS	—	WS19-75NS	—

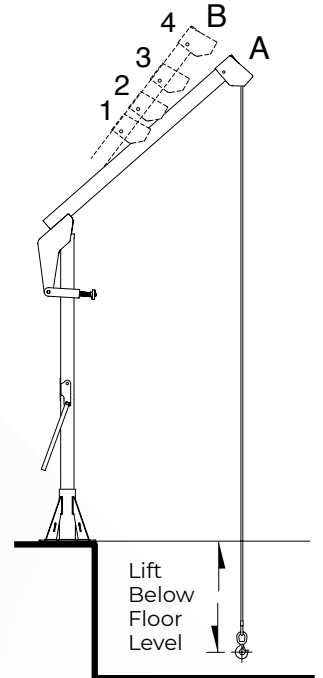
PERFORMANCE

Ensign 500 5PA5 Series Lift Below Floor¹ Level

Lift Below Floor ²		Wire Rope Diameter		Wire Rope Length		Winch Configurations Maximum Winch Rating											
Minimum (B4)	Maximum (B1)					M1		M2		M3		E2		E4			
0	0.0	7	2.1	3/16"	5	20	6.0	500	226	-	-	500	226	-	-	500	226
8	2.4	15	4.5	3/16"	5	28	8.5	500	226	-	-	500	226	-	-	500	226
16	4.8	23	7.0	3/16"	5	36	10.9	500	226	-	-	500	226	-	-	500	226
25	7.6	32	9.7	3/16"	5	45	13.7	500	226	-	-	500	226	-	-	500	226
40	12.1	47	14.3	3/16"	5	60	18.2	-	-	-	-	500	226	-	-	500	226
55	16.7	62	18.8	3/16"	5	75	22.8	-	-	-	-	500	226	-	-	500	226
70	21.3	77	23.4	3/16"	5	90	27.4	-	-	-	-	-	-	-	-	500	226
100	30.4	107	32.6	3/16"	5	120	36.5	-	-	-	-	-	-	-	-	500	226
2	0.6	7	2.1	1/4"	6	20	6.0	-	-	500	226	500	226	500	226	500	226
10	3.0	15	4.5	1/4"	6	28	8.5	-	-	500	226	500	226	500	226	500	226
18	5.4	23	7.0	1/4"	6	36	10.9	-	-	500	226	500	226	500	226	500	226
27	8.2	32	9.7	1/4"	6	45	13.7	-	-	500	226	500	226	500	226	500	226
42	12.8	47	14.3	1/4"	6	60	18.2	-	-	500	226	-	-	500	226	500	226
57	17.3	62	18.8	1/4"	6	75	22.8	-	-	-	-	-	-	-	-	500	226
72	21.9	77	23.4	1/4"	6	90	27.4	-	-	-	-	-	-	-	-	-	-
102	31.0	107	32.6	1/4"	6	120	36.5	-	-	-	-	-	-	-	-	-	-

¹ Performance characteristics are for standard products. Non-standard products may vary from the original design. Contact Thern, Inc. for this information.

² Lift below floor level varies depending on boom position and base configuration. For longer lifts, please contact factory.



Winch Configurations



Ensign 500 Performance Ratings with Pedestal Base¹

Boom Position	Load Rating		Hook Reach		Hook Height	
	(lb)	(kg)	(in)	(mm)	(in)	(mm)
A-1	500	227	17	431	74	1,879
A-2	400	181	22	558	79	2,006
A-3	300	136	28	711	87	2,209
A-4	250	113	36	914	96	2,438
B-1	500	227	14	355	76	1,930
B-2	400	181	17	431	83	2,108
B-3	300	136	22	558	91	2,311
B-4	250	113	28	711	101	2,565

¹ Performance characteristics are for standard products. Non-standard products may vary from the original design. Contact Thern, Inc. for this information.

Dimensions are for reference only and subject to change without notice.

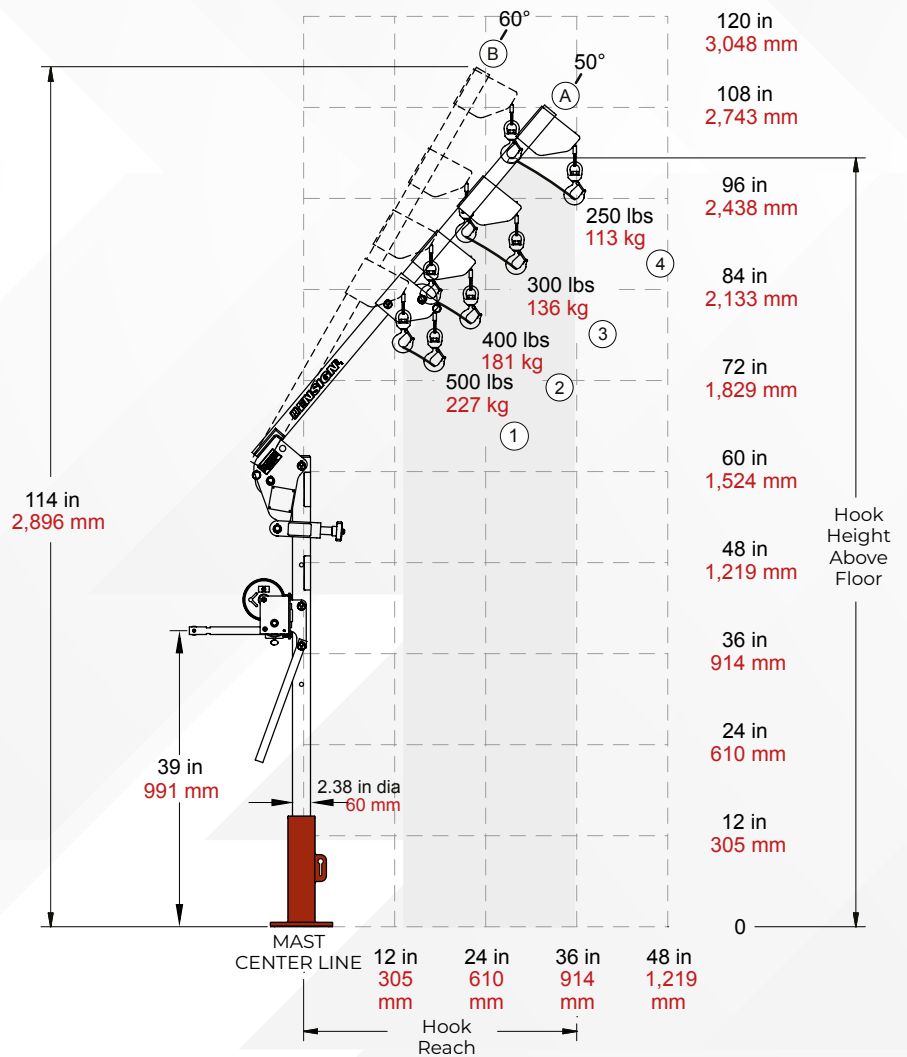
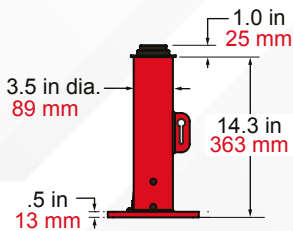
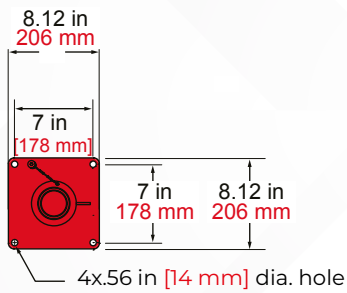
Ensign 500 Pedestal Base

5BP5
5BP5G

5BP5S
5BP5S316

5BP5X

Pedestal Base



Ensign 500 Performance Ratings with Flush- or Wall-Mount Bases¹

Boom Position	Load Rating		Hook Reach		Hook Height	
	(lb)	(kg)	(in)	(mm)	(in)	(mm)
A-1	500	227	17	431	60	1,524
A-2	400	181	22	558	65	1,651
A-3	300	136	28	711	73	1,854
A-4	250	113	36	914	82	2,082
B-1	500	227	14	355	62	1,574
B-2	400	181	17	431	69	1,752
B-3	300	136	22	558	77	1,955
B-4	250	113	28	711	87	2,209

¹ Performance characteristics are for standard products. Non-standard products may vary from the original design. Contact Thern, Inc. for this information.

Dimensions are for reference only and subject to change without notice.

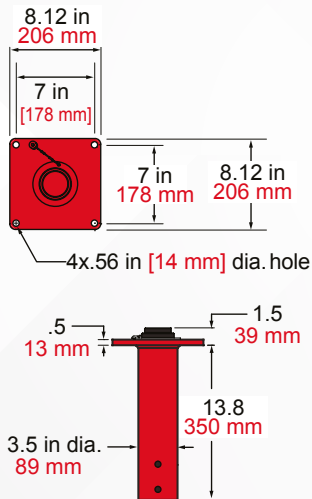
Ensign 500 Flush-Mount Base

5BF5 5BF5S 5BF5X
5BF5G 5BF5S316

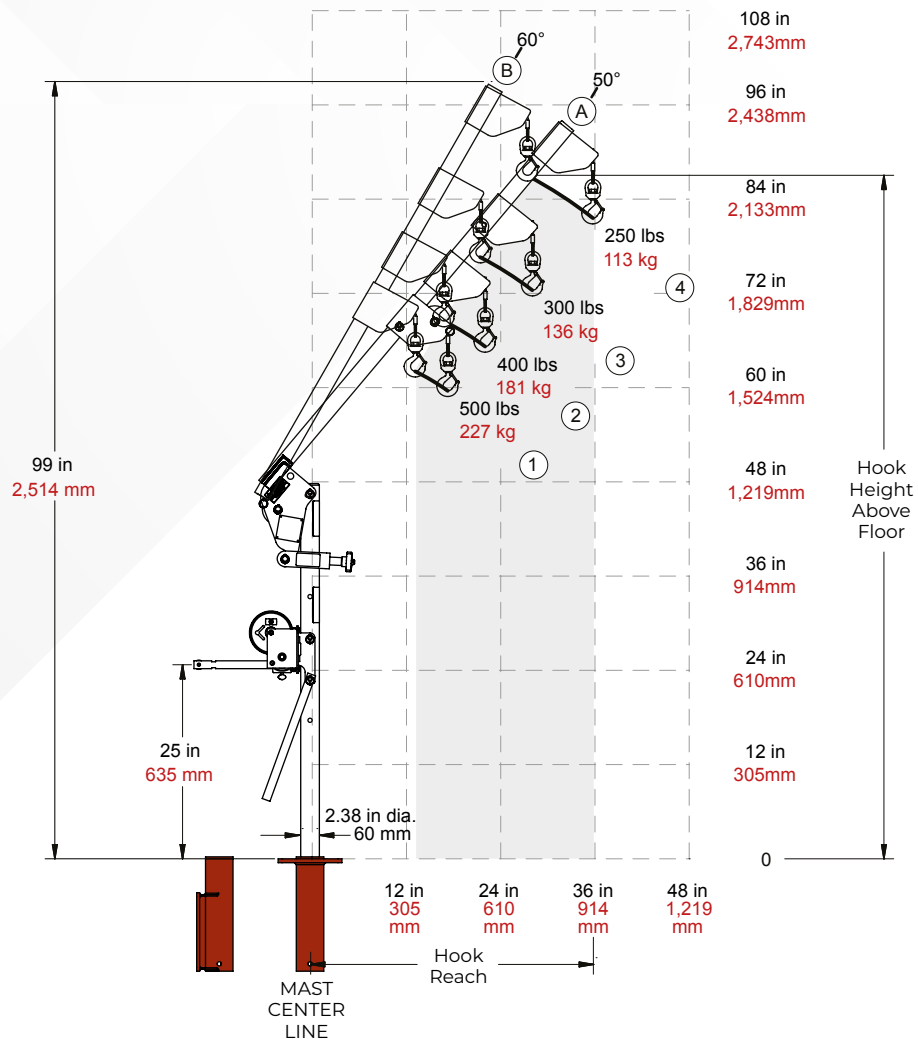
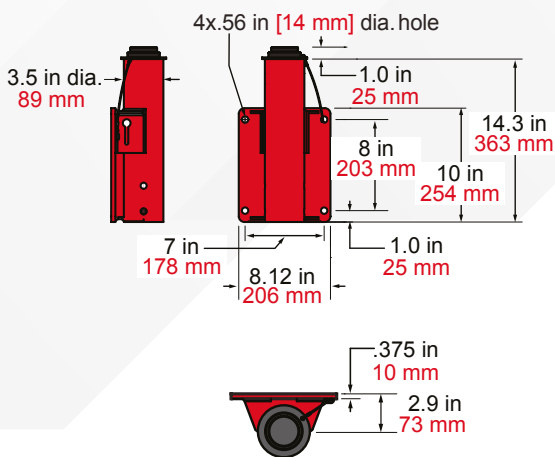
Ensign 500 Wall-Mount Base

5BW5 5BW5S 5BW5X
5BW5G 5BW5S316

Flush-Mount Base



Wall-Mount Base



CRANE

OPTIONS & ACCESSORIES



Base Anchor Kit	
Model	Description
AN50A-5	(4) Hilti® zinc-plated steel fasteners 1/2" X 5.50" STL (5PA5, 5PF5, and 5PT5 cranes)
AN50A-5S	(4) Hilti® 304 stainless-steel fasteners 1/2" X 5.50" SST304 (5PA5, 5PF5, and 5PT5 cranes)
AN50A-5S316	(4) Hilti® 316 stainless-steel fasteners 1/2" X 5.50" SST316 (5PA5, 5PF5, and 5PT5 cranes)
AN62A-6	(4) Hilti® zinc-plated steel fasteners 5/8" X 6.00" STL (5PA10, 5PT10, 5PT20, and 5FT20 cranes)
AN62A-6S	(4) Hilti® 304 stainless-steel fasteners 5/8" X 6.00" SST304 (5PA10, 5PT10, 5PT20, and 5FT20 cranes)
AN62A-6S316	(4) Hilti® 316 stainless-steel fasteners 5/8" X 6.00" SST316 (5PA10, 5PT10, 5PT20, and 5FT20 cranes)



Rotational Lock	
Model	Description
5P5LCK	For pedestal, wall, and flush-mount bases, 316 stainless steel—available for use 5PA5, 5PF5, and 5PT5



Cable Spooler	
Model	Description
RW50	316 stainless-steel reel winds up wire rope when detached from crane



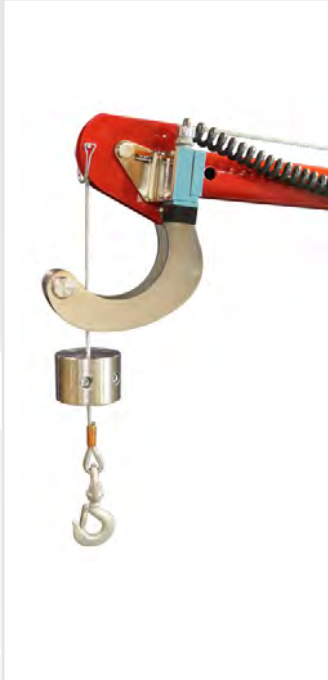
Wire Rope Keeper	
Model	Description
RK19-25S	304 Stainless-steel bracket holds free end of the wire rope when detached from the crane
RK19-25S316	316 Stainless-steel bracket holds free end of the wire rope when detached from the crane



Roller Ball Bearing for 5PT10 Series Crane	
Model	Description
5PT10BRG	Red electrostatic, powder-coat paint finish
5PT10BRG-S	304 stainless-steel, electro-polished finish for added protection against corrosion
5PT10BRG-S316	Stainless-steel, electro-polished finish for maximum protection against corrosion
5PT10BRG-SS	304 stainless steel, for use with stainless-steel base only
5PT10BRG-SS316	316 stainless steel, for use with stainless-steel base only



Roller Ball Bearing for 5PT20 Series Crane	
Model	Description
5PT20BRG	Red electrostatic, powder-coat paint finish
5PT20BRG-S	304 stainless-steel, electro-polished finish for added protection against corrosion
5PT20BRG-S316	Stainless-steel, electro-polished finish for maximum protection against corrosion
5PT20BRG-SS	304 stainless steel, for use with stainless-steel base only
5PT20BRG-SS316	316 stainless steel, for use with stainless-steel base only



Limit Switch Ready Winch Options

Model	Description
NOTE: Limit switch winch option requires purchase of Limit Switch and Headache Ball (sold separately)	
For 5PF5, 5PA5, 5PA10, 5PT5, 5PT10, 5PT20 Series Cranes (sold separately)	
E2L (5PA5, 5PA10)	4WP2V-KL electric winch – 115/1/60 VAC with 6 ft pendant control – enamel
E2LX (5PA5, 5PA10)	4WP2VEGRA-KL electric winch – 115/1/60 VAC with 6 ft pendant control – epoxy gray
E4L	4777-KL electric winch – 115/1/60 VAC with 6 ft pendant control – enamel
E4LX	4777EGRA-KL electric winch – 115/1/60 VAC with 6 ft pendant control – epoxy gray
E4DCL	4777DC-KL electric winch – 12 volt DC with 10 ft pendant control – enamel
E4DCLX	4777DCEGRA-KL electric winch – 12 volt DC with 10 ft pendant control – epoxy gray
For 5FT20 Series Crane Only (sold separately)	
E2L	4WP2-KL electric winch – 115/1/60 VAC with 6 ft pendant control – enamel
E2LX	4WP2EGRA-KL electric winch – 115/1/60 VAC with 6 ft pendant control – epoxy gray
E4L	4771-KL electric winch – 115/1/60 VAC with 6 ft pendant control – enamel finish
E4LX	4771EGRA-KL electric winch – 115/1/60 VAC with 6 ft pendant control – gray-epoxy finish
E4DCL	E4DCL 4771DC-KL electric winch – 12 volt DC with 10 ft pendant control – enamel finish
E4DCLX	4771DCEGRA-KL electric winch – 12 volt DC with 10 ft pendant control – gray-epoxy finish
For 5PT30, 5FT25, 5FT40 Series Crane Only (sold separately)	
E2L	3WG4B-KL electric winch - 115/1/160 VAC with 6 ft pendant control – enamel finish
E2LX	3WG4BEGRA-KL electric winch - 115/1/160 VAC with 6 ft pendant control – epoxy gray finish
E2TL	3WG4BMT-K electric winch - 115/1/160 VAC with 6 ft pendant control – enamel finish (Unavailable for use with 5FT40)
E2TLX	3WG4MTX-KL electric winch - 115/1/160 VAC with 6 ft pendant control – epoxy gray finish



Drill Drive Kit

Model	Description
ED330-DW11	120 VAC, 11-amp, 330 rpm drill motor to power drive the hand winch. Only available for cranes configured with the M2 winch option. Includes 1-1/8" hex drive socket
ED300-DW06	Cordless drill kit, 60 V brushless motor, 300 rpm drill motor to power drive the M2 hand winch option. Includes 1-1/8" hex drive socket
ED400-DW09	Heavy-duty cordless drill kit, 60 V brushless motor, 400 rpm drill motor to power drive the M2 hand winch option. Includes 1-1/8" hex drive socket



Headache Ball

Model	Description
HB10-12-25	Red enamel painted 10 lb fits 1/8" to 1/4" rope
HB10-25-38	Red enamel painted 10 lb fits 1/4" to 3/8" rope
HB10S-12-25	Stainless-steel 10 lb fits 1/8" to 1/4" rope
HB10S-25-38	Stainless-steel 10 lb fits 1/4" to 3/8" rope
HB10S-44-50	Stainless-steel 10 lb fits 7/16" to 1/2" rope



Base Extension

Model	Description
5BE5-15	Available on 5PF5, 5PT5, 5PT10, and 5PT20 with powder-coat, galvanized, 304 & 316 stainless-steel, and epoxy finishes
5BE10-15	
5BE20-15	

Waar kunt u ons vinden?

Voor uw dichtstbijzijnde vestiging kunt u kijken op **samenvoorkwaliteit.nl**

Wij zijn 24/7 bereikbaar in geval van calamiteiten.



LiftingPlus
Hijsen met visie

Liftingplus BV

E info@liftingplus.nl

liftingplus.nl

samenvoorkwaliteit.nl

NB van den Berg Bros
Takeltechniek

Van den Berg Bros
Takeltechniek BV

E info@vandenbergbros.nl

takeltechniek.nl